

Change of the Seasons

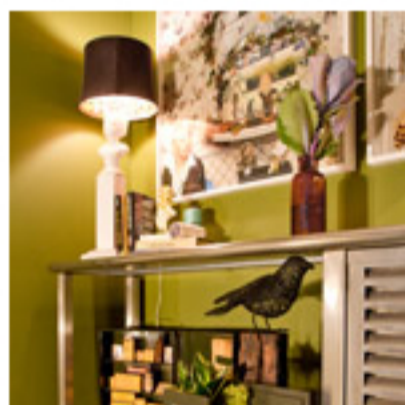
As the leaves turn their fall hues, inspiration comes in rich colors. The emergence of precious metals mark a new trend, and we demonstrate the importance of what lies beneath.



Heavy Metal Design

11/06/12 Melinda Ashton Turner, Stylist/Interior Designer

Our guest writer Melinda Ashton Turner reveals how brass, bronze, pewter and copper could all be seen on almost every stand over London Design Festival and Maison et Objet. Materials that were used by past generations have been reborn in 2012 and paired with concrete, wood and marble. [READ MORE](#)



Fall Trend Peeping

11/06/12 Sara McLean, Color Marketing Manager, Dunn-Edwards

With the changing of the seasons, so comes a bounty of color and inspiration. From pinks to plums, cobalt to chocolate, vintage glam to geometric shapes - we take a look at some of the colors and design trends in the marketplace during this magical period. [READ MORE](#)



To Prime or Not to Prime

11/06/12 Dave Heiligenthal, Product Manager, Dunn-Edwards

There are a growing number of paint companies who claim that their paint is "self-priming," but do these paints really eliminate the need to prime? We detail what proper priming really means and why it's important to the longevity of your paint. [READ MORE](#)

Forward to a Friend



Follow Us

